


Title: Welch Allyn Vital Signs Windows USB Driver version 1.9.12 support for Windows 11

Question or Item	Answer
Date Created:	14FEB2025
Customer:	Welch Allyn Vital Signs Windows USB Driver version 1.9.12 support for Windows 11
Product(s) affected:	Welch Allyn Platform VSM (CVSM) Welch Allyn Connex Spot Monitor (CSM)
Hardware Version(s) affected:	N/A
Software Version(s) affected:	USB Driver Version 1.9.12
Serial Number(s) affected:	N/A
Lot or Date Code affected:	N/A
Issue details:	
<p>Baxter Inc. is pleased to announce that the USB driver for connecting vital signs devices is now verified for use on Windows 11 with CVSM and CSM devices.</p>	

Solution/Action:

To load the USB driver on Windows 11:

Once the driver package has been downloaded, create a new folder to extract the zip archive package from the customer's desktop. Unzip contents to a new folder on the desktop. Once this is complete, manually update a device driver from Device Manager on **Windows 11** by following these steps:

1. Connect a Vitals device (CSM, CVSM) to Windows 11 via USB.
2. Open **Start** or 
3. Search for **Device Manager** and click on the result to open.
4. Double-click the branch with the hardware to update.
5. Right-click on the device and select **Update driver**.

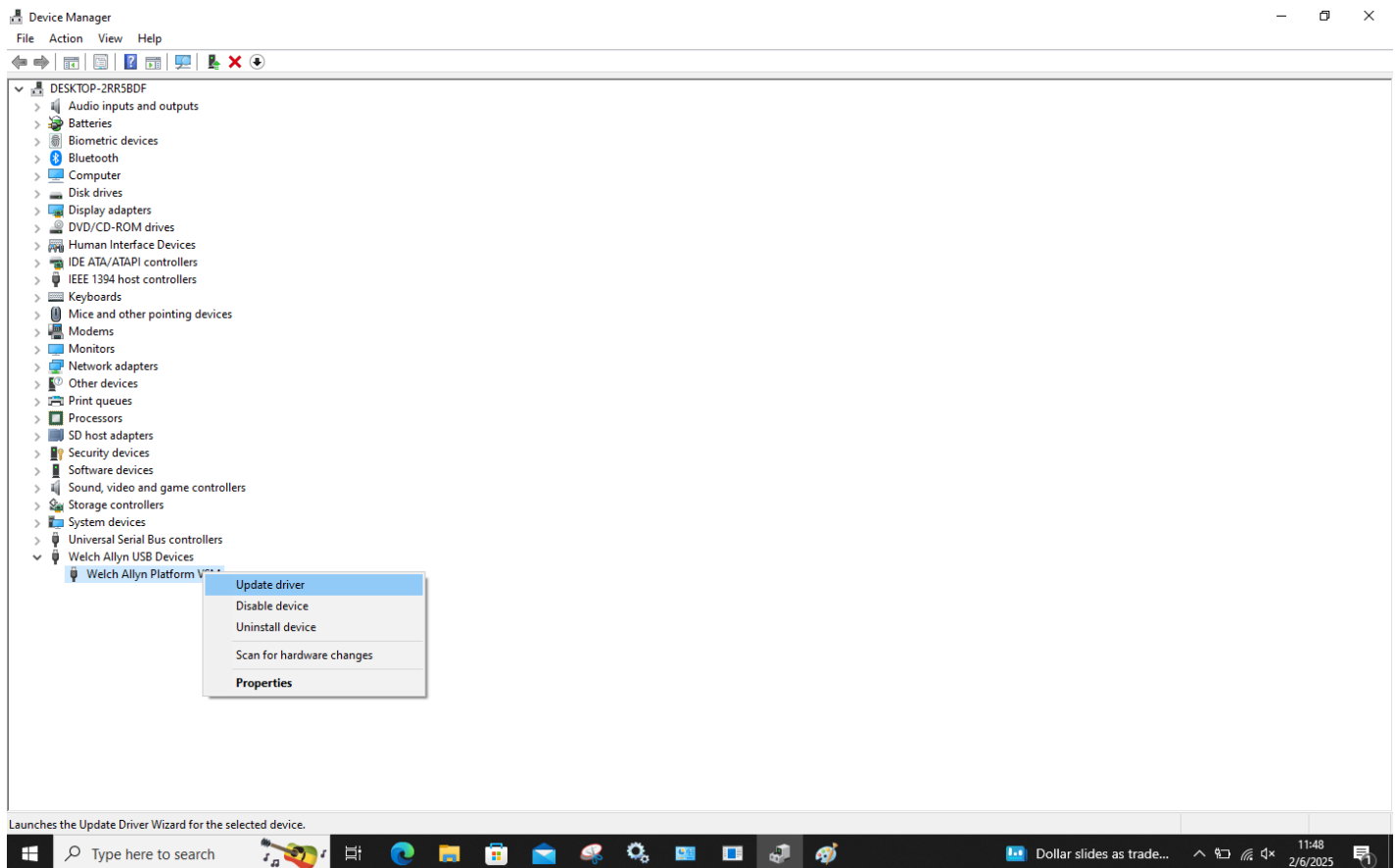


Figure 1 – Device Manager/ Update Driver

BAXTER and Welch Allyn are registered trademarks of Baxter International Inc.

All other products and registered trademarks appearing herein are the property of their respective owners.

©Copyright 2025, Baxter Healthcare Corporation. All Rights Reserved.

6. Click the "**Browse my computer for drivers**" option.

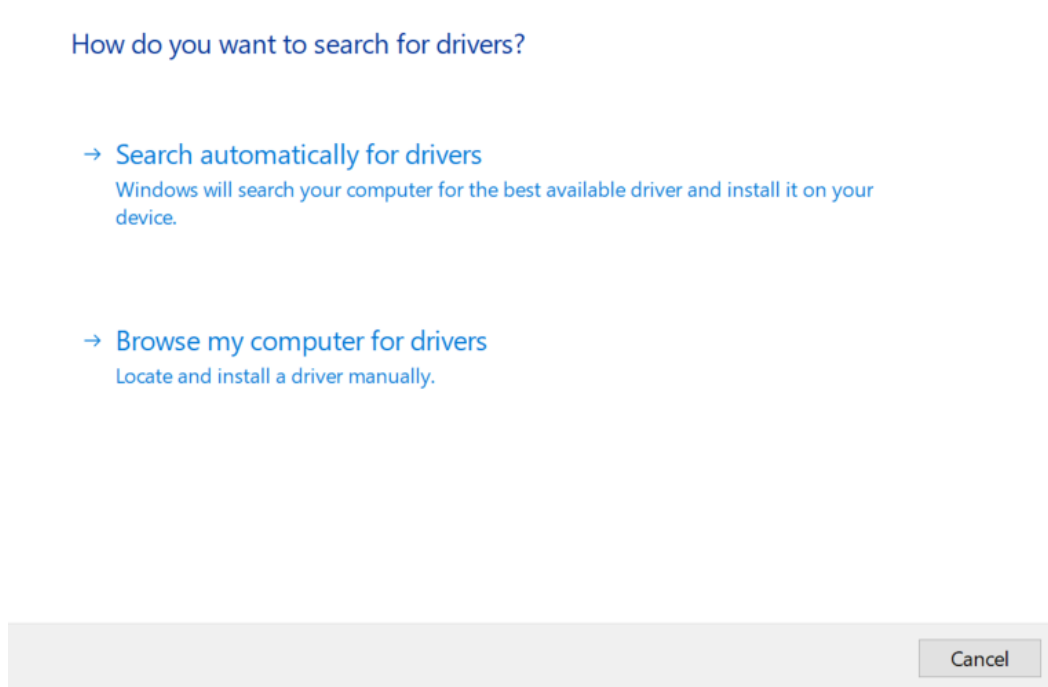


Figure 2 – Browse for Drivers

7. Click the **Browse** button.

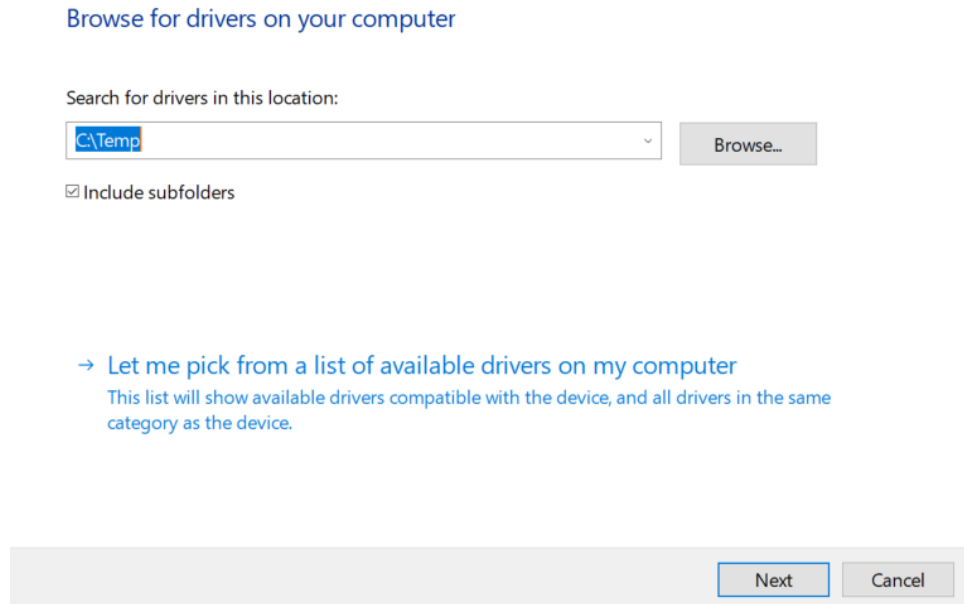


Figure 3 – Browse Menu

8. Select the folder with the extracted Welch Allyn USB driver files.

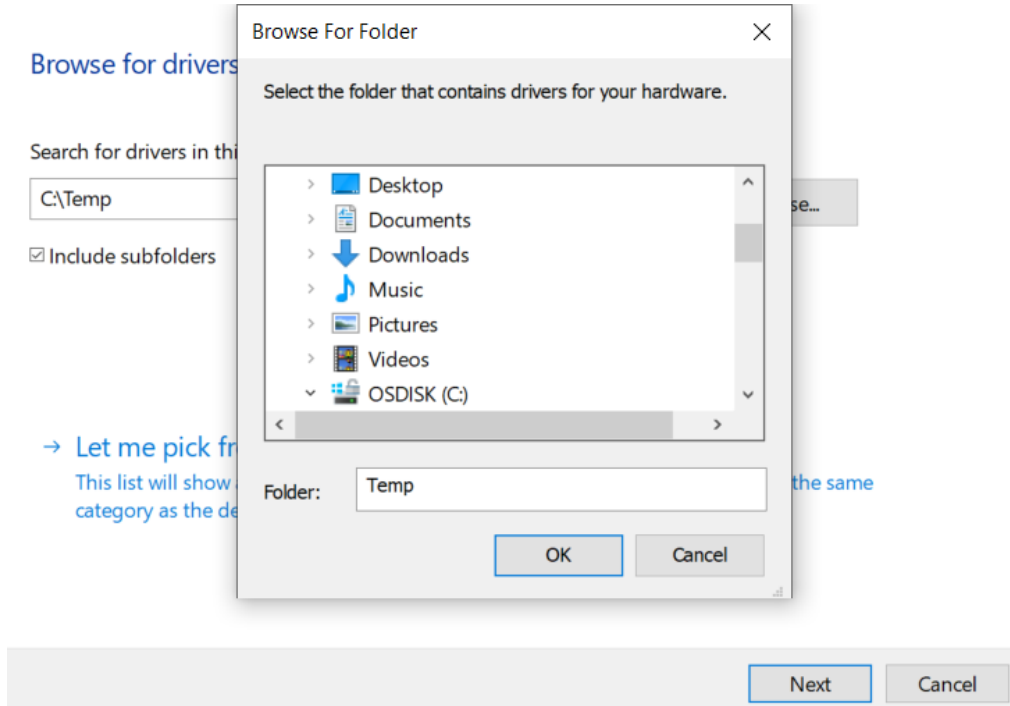


Figure 4 – Browse for Folder

9. Click the **OK** button.
10. Check the **Include subfolders** box to allow the wizard to search for the correct ".inf" file for the driver update.

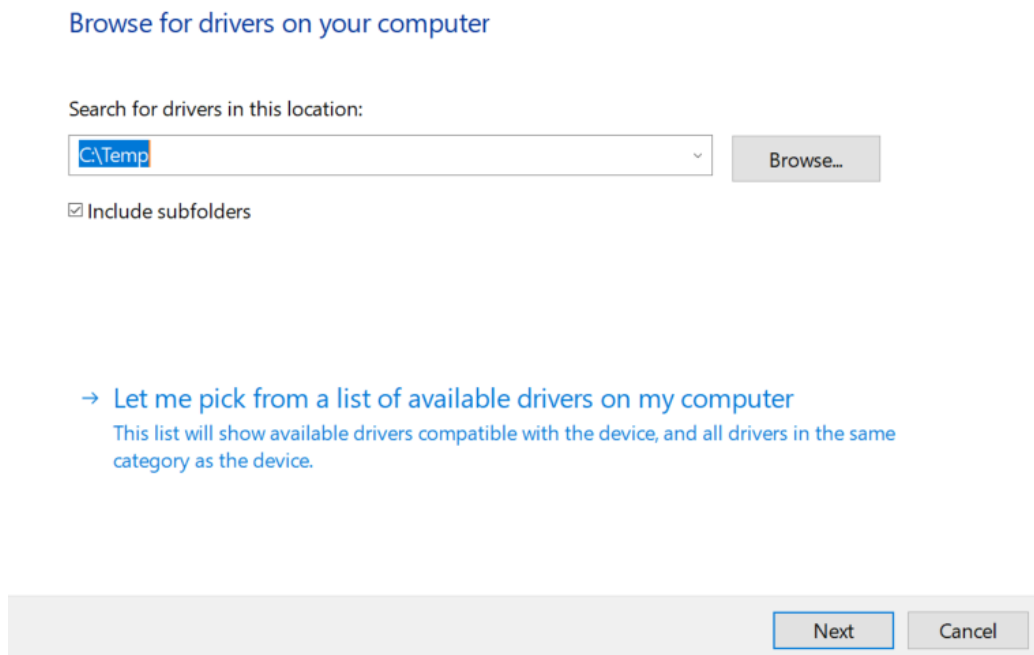


Figure 5 – Browse for Drivers

11. Click the **Next** button.

After you complete these steps, the driver will be installed after the wizard is complete. Repeat these steps as needed for each supported device.

NOTE: If the driver does not load, please get in touch with Baxter Technical Support

NOTE: This procedure should be followed with one CVSM or one CSM.

NOTE: This bulletin may also be found on the affected products webpage, under the Education & Documentation tab.