

## Welch Allyn Connex Spot Monitor

### Startup guide

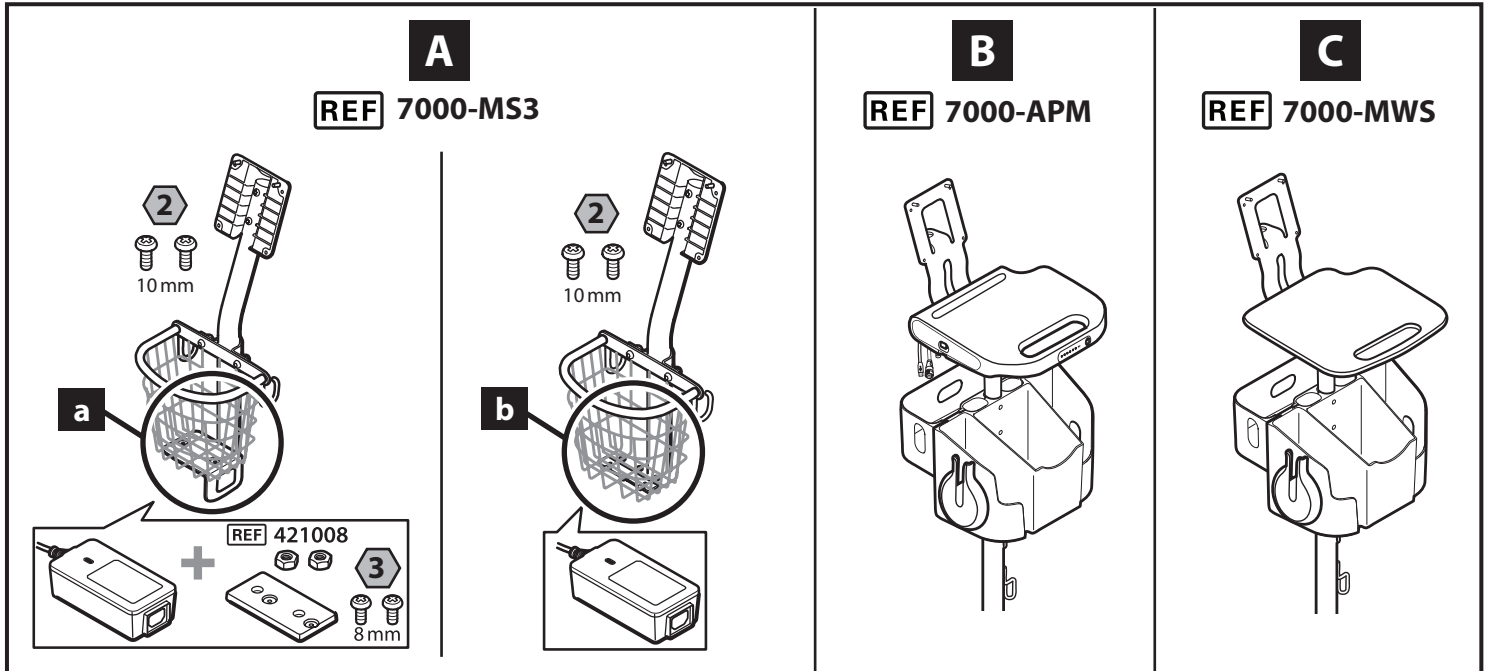
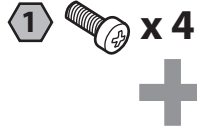
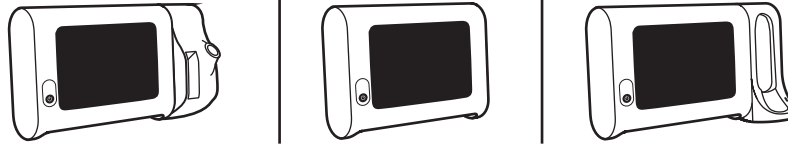
REF 778013, 80030840 Ver. A

Revision date: 2024-06

Baxter, Connex and Welch Allyn are trademarks of Baxter International Inc. or its subsidiaries.

[baxter.com](http://baxter.com)

**Baxter Technical Support** [baxter.com/contact-us](http://baxter.com/contact-us)



**IMPORTANT!** Ensure that you have both a Connex Spot Monitor and an approved stand before proceeding with assembly.

**重要提示!** 确保在继续执行组装之前准备好 Connex Spot 监护仪和认可的架。(CN)

**重要事項!** 您必須同時具備 Connex Spot 監視器與認可的支架，才能開始進行組裝。(TW)

**VAŽNO!** Pobrinite se da posjedujete monitor Connex i odobreni stalak prije nego nastavite s postavljanjem. (HR)

**DŮLEŽITÉ!** Než budete pokračovat v sestavení, musíte mít připraven Connex Spot Monitor a schválený stojan. (CS)

**VIGTIG!** Samlingen må først påbegyndes, når man har sikret sig, at man både er i besiddelse af en Connex Spot Monitor og en godkendt stander. (DA)

**BELANGRIJK!** Zorg ervoor dat u een Connex Spot Monitor en een goedgekeurde standaard hebt voordat u verdergaat met het in elkaar zetten van het geheel. (NL)

**TÄRKEÄÄ!** Varmista ennen kokoonpanovaiheen jatkamista, että sekä Connex Spot -monitori että asianmukainen teline ovat käytettävissä. (FI)

**IMPORTANT!** Avant de procéder au montage, veillez à disposer d'un moniteur Connex Spot et d'un socle agréé. (FR)

**WICHTIG!** Sicherstellen, dass sowohl ein Connex Spot Monitor als auch ein zugelassener Ständer vorhanden sind, bevor mit dem Zusammenbau fortgefahren wird. (DE)

**ΣΗΜΑΝΤΙΚΟ!** Βεβαιωθείτε ότι διαθέτετε τόσο το Connex Spot Monitor όσο και μια εγκεκριμένη βάση προτού προχωρήσετε με τη συναρμολόγηση. (EL)

**FONTOS!** A szerelvény összeállítása előtt győződjön meg róla, hogy rendelkezik a Connex betegmonitorral és a jóváhagyott állvánnyal. (HU)

**IMPORTANTE!** Assicurarsi di avere il Connex Spot Monitor e un supporto approvato prima di procedere con il montaggio. (IT)

**МАҢЫЗДЫ!** Құрастыруды жалғастырмас бұрын, сізде Connex нүктелік мониторы мен мақұлданған тіректің бар екендігіне көз жеткізіңіз. (KK)

**중요!** 조립을 진행하기 전에 Connex Spot 모니터 및 승인된 스탠드가 모두 있는지 확인하십시오. (KO)

**SVARIG!** Pirms sākat montāžu, pārliecinieties, ka jums ir gan Connex vitālo funkciju pārraudzības ierīce, gan apstiprināts statīvs. (LV)

**VIKTIG!** Sørg for at du både har en Connex Spot Monitor og et godkjent stativ før du fortsetter med montering. (NO)

**WAŻNE!** Przed przystąpieniem do montażu należy upewnić się, że użytkownik posiada monitor Connex Spot jak i zatwierdzony stojak. (PL)

**IMPORTANTE!** Certifique-se de estar com o Monitor Connex Spot e com um suporte aprovado antes de iniciar a montagem. (BR)

**IMPORTANTE!** Certifique-se de que dispõe de um Monitor Connex Spot e de um suporte aprovado antes de proceder à montagem. (PT)

**IMPORTANT!** Asigurați-vă că dispuneți atât de un Connex Spot Monitor, cât și de un suport aprobat înainte de a continua asamblarea. (RO)

**ВАЖНО!** Перед сборкой убедитесь в наличии Connex Spot Monitor и утвержденной стойки. (RU)

**VAŽNO!** Vodite računa da imate Connex Spot Monitor i odobreno postolje pre nego što započnete sklapanje. (SR)

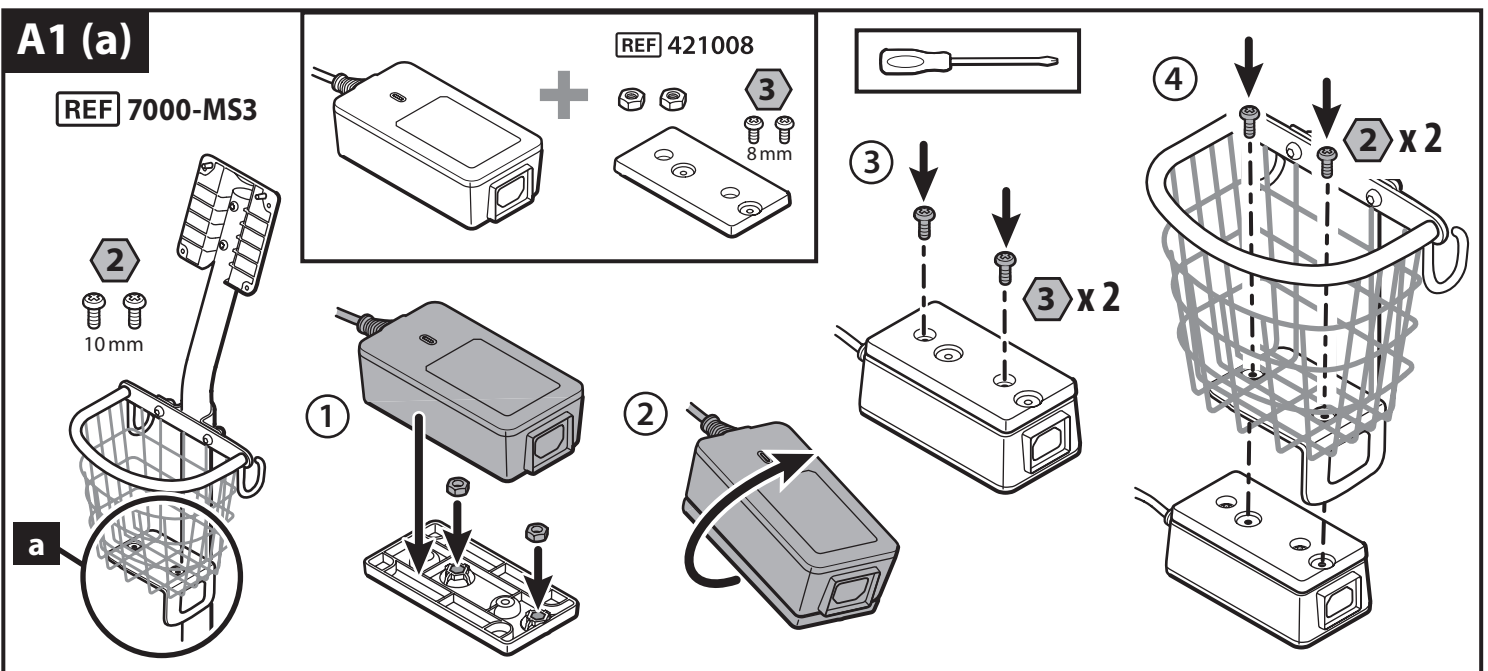
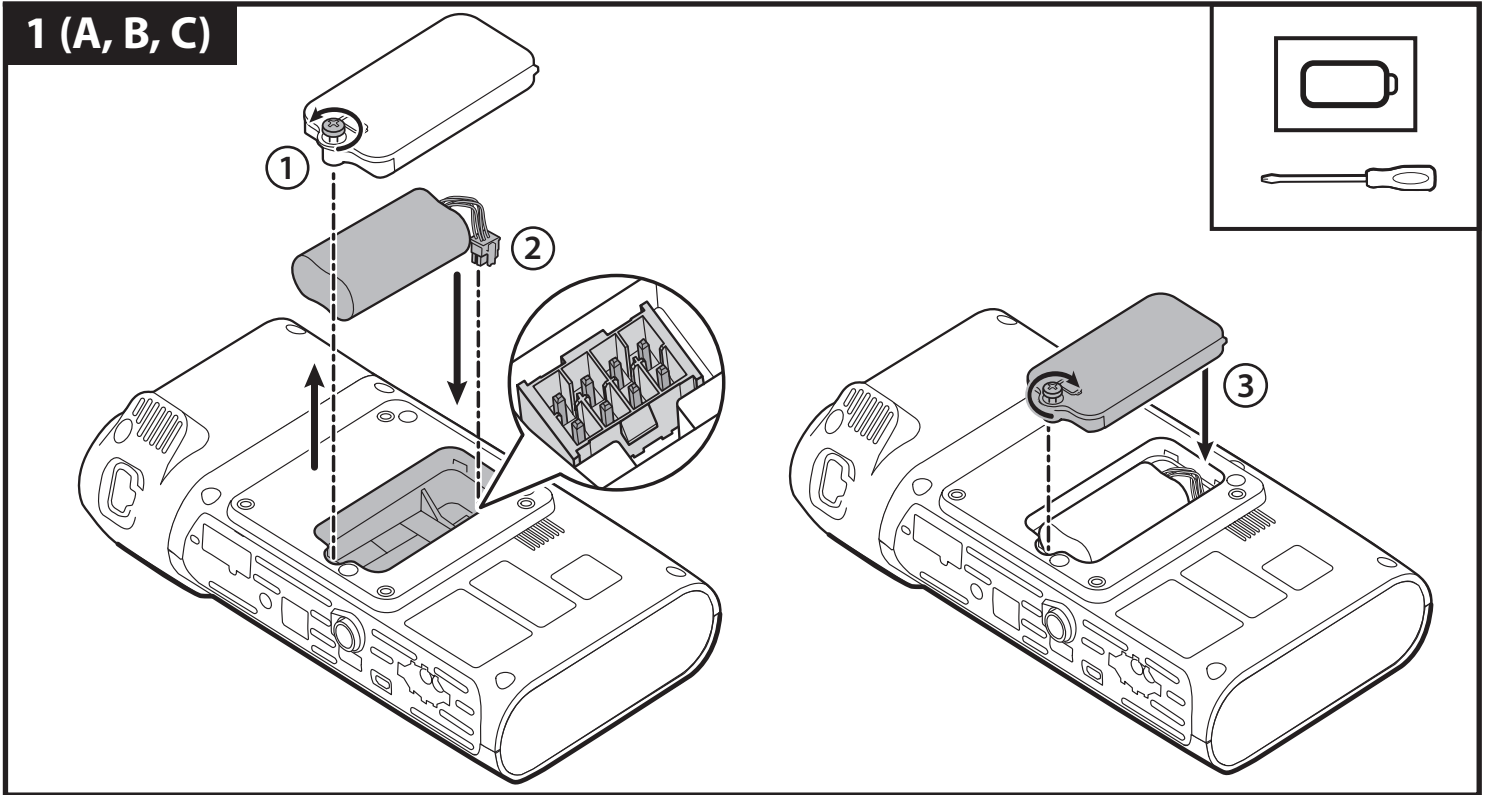
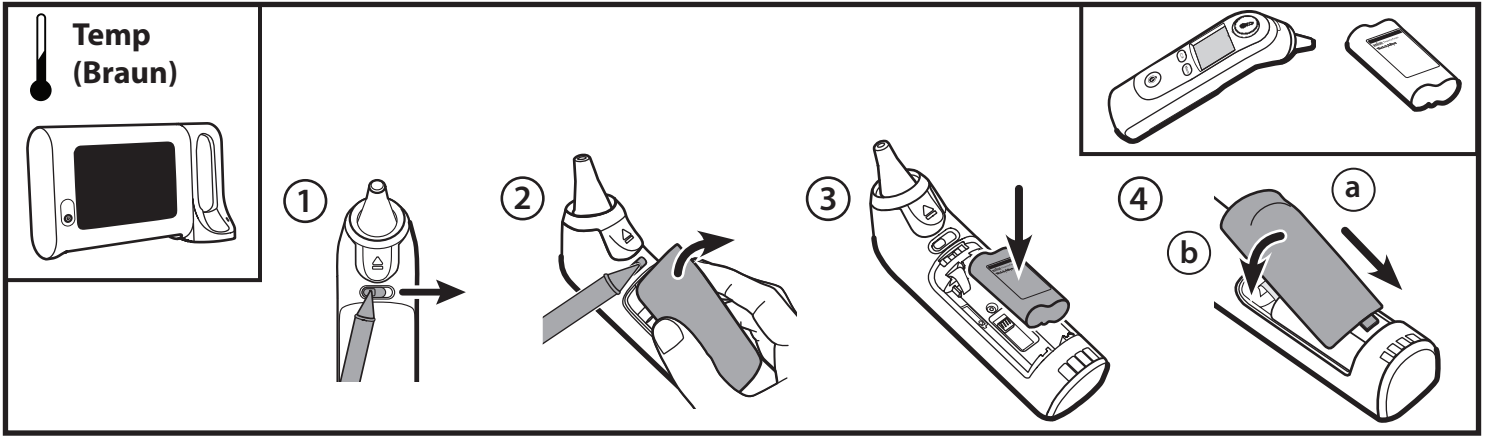
**POMEMBNO!** Pred začetkom sestavljanja morate pripraviti monitor Connex Spot in odobreno stojalo. (SL)

**IMPORTANTE!** Asegúrese de que dispone de un monitor secundario Connex y un soporte aprobado antes de proceder al montaje. (ES)

**VIKTIG!** Se till att du har både en Connex Spot Monitor och ett godkänt stativ innan du fortsätter med montering. (SV)

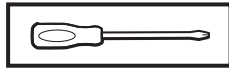
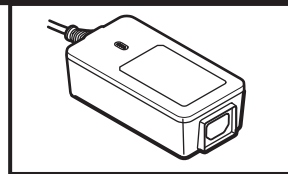
**สำคัญ!** ตรวจสอบให้แน่ใจว่าคุณมีทั้งมอนิเตอร์และขาตั้งที่ได้รับการอนุมัติก่อนดำเนินการประกอบ (TH)

**ÖNEMLİ NOT!** Montaj işlemiyle devam etmeden önce bir Connex Spot Monitöre ve onaylı bir standa sahip olduğunuzdan emin olun. (TR)

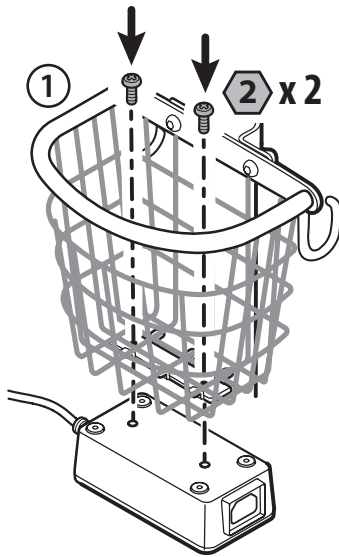


### A1 (b)

REF 7000-MS3



2  
10mm



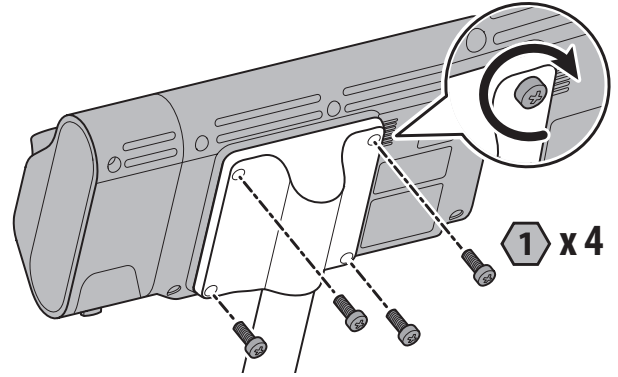
b

### A2 (a, b)

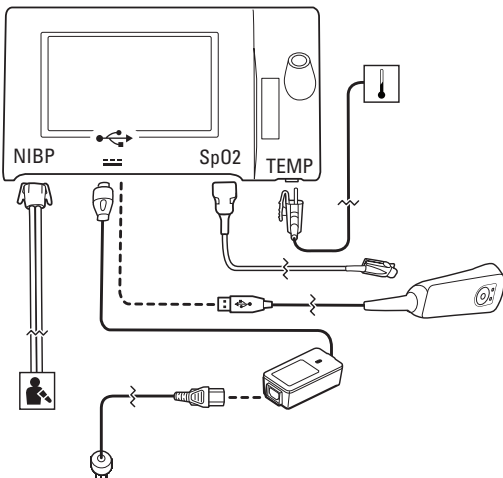
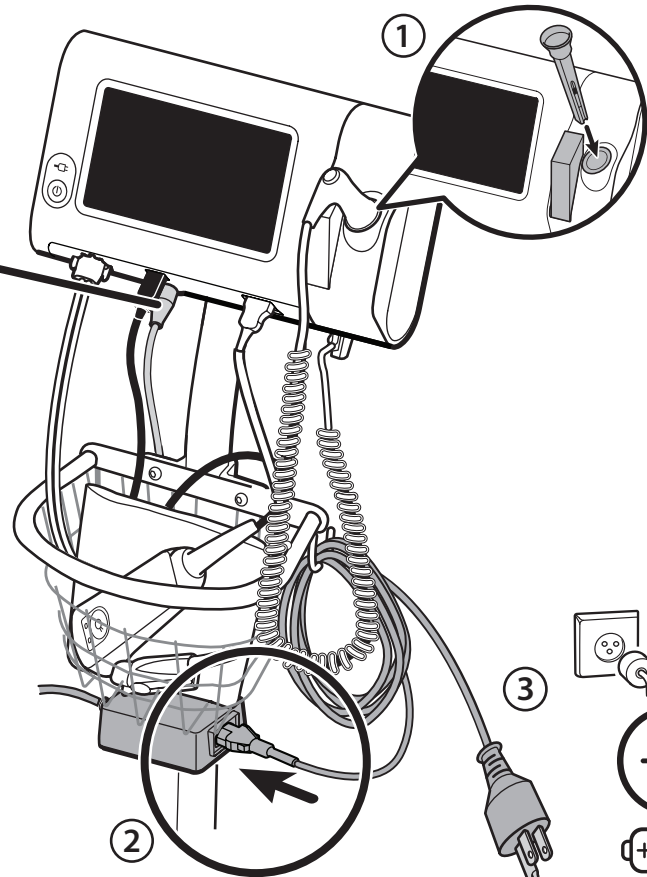
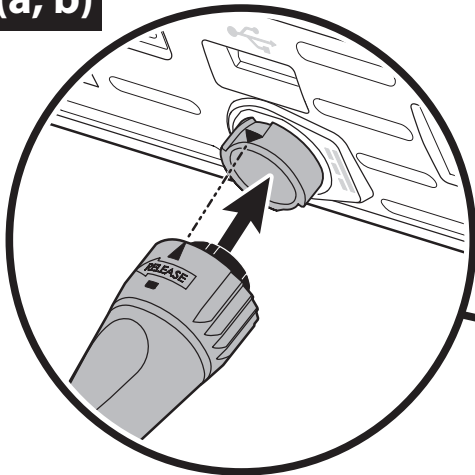
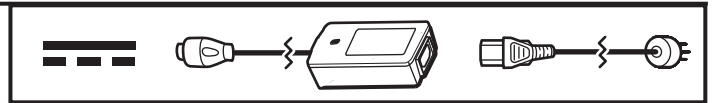


1

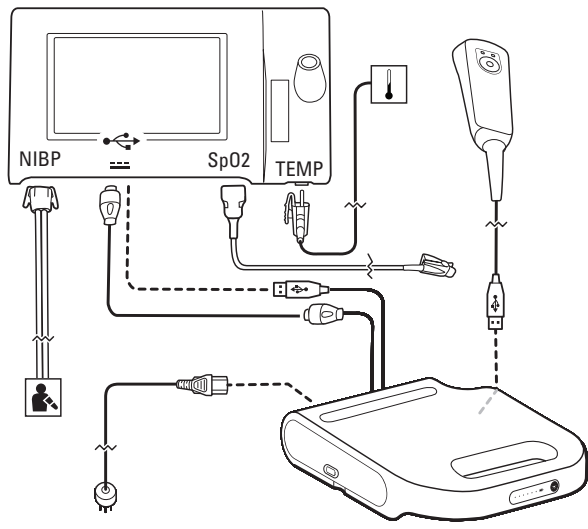
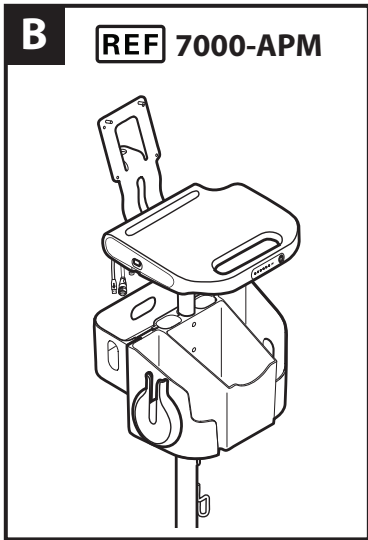
x 4



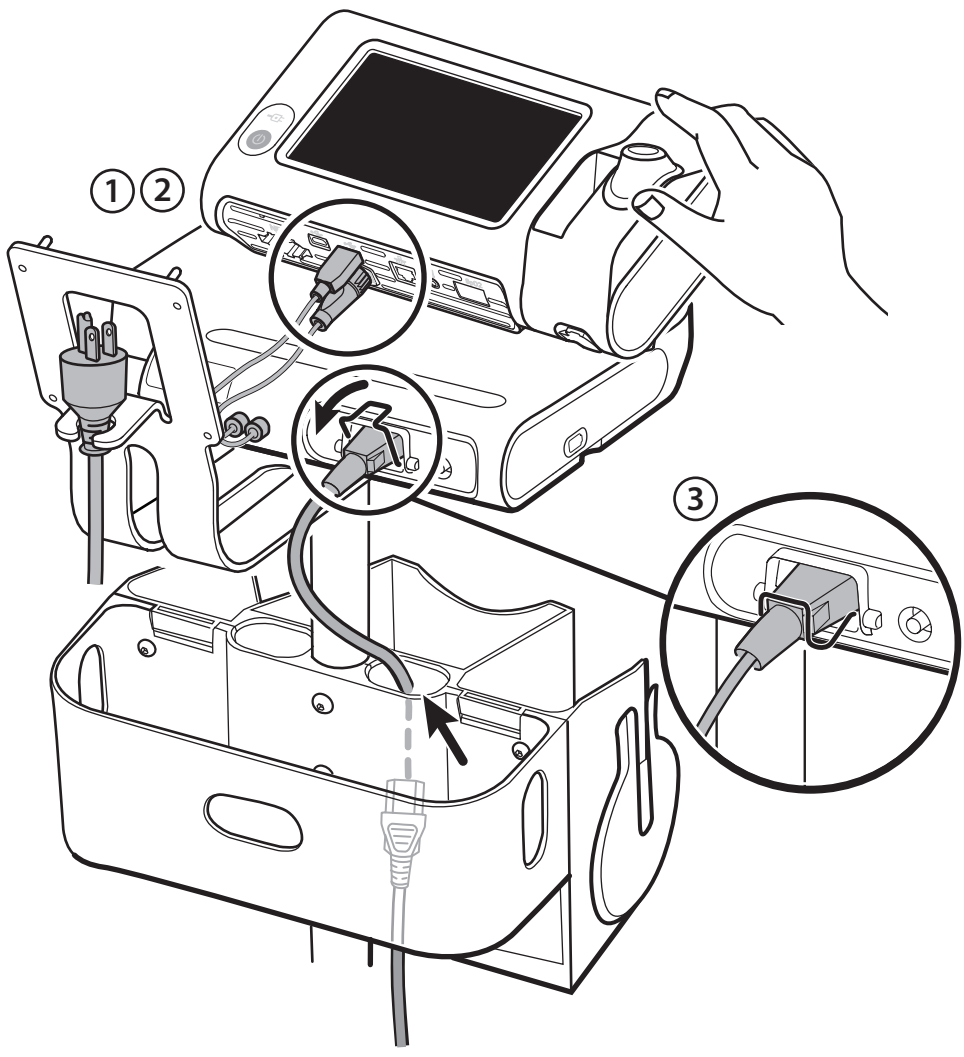
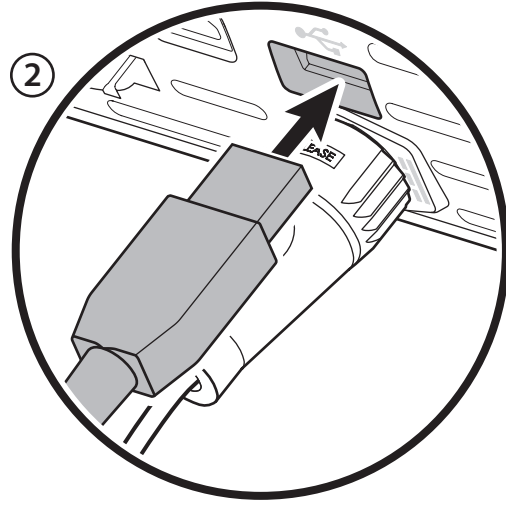
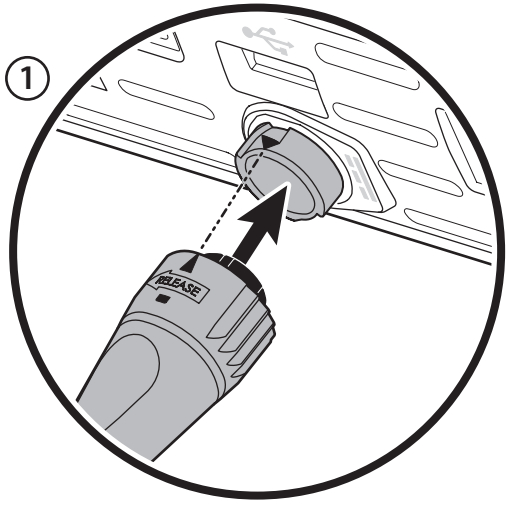
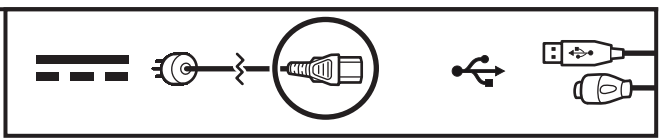
### A3 (a, b)



**B** REF 7000-APM

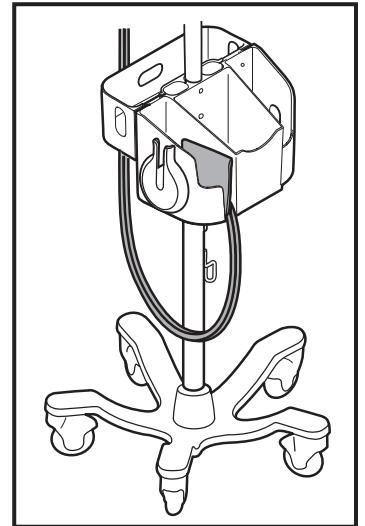
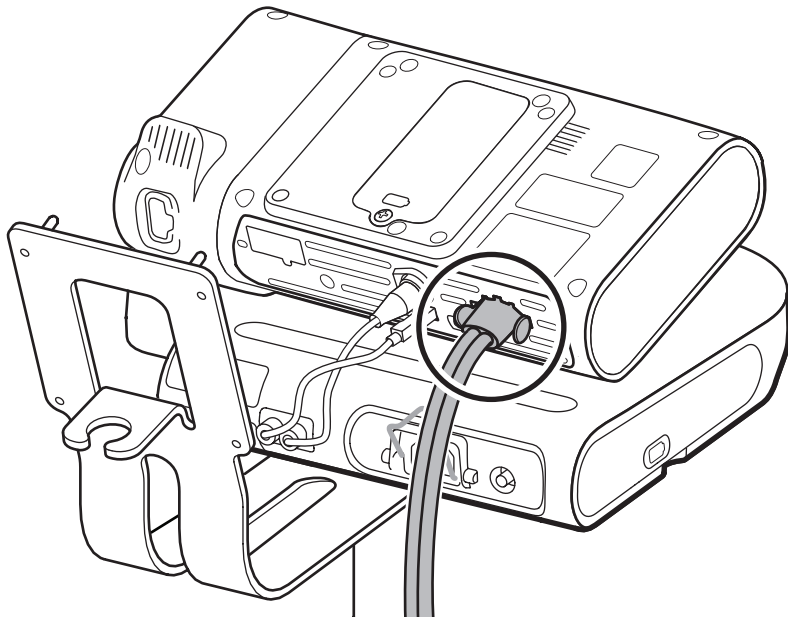


**B1**



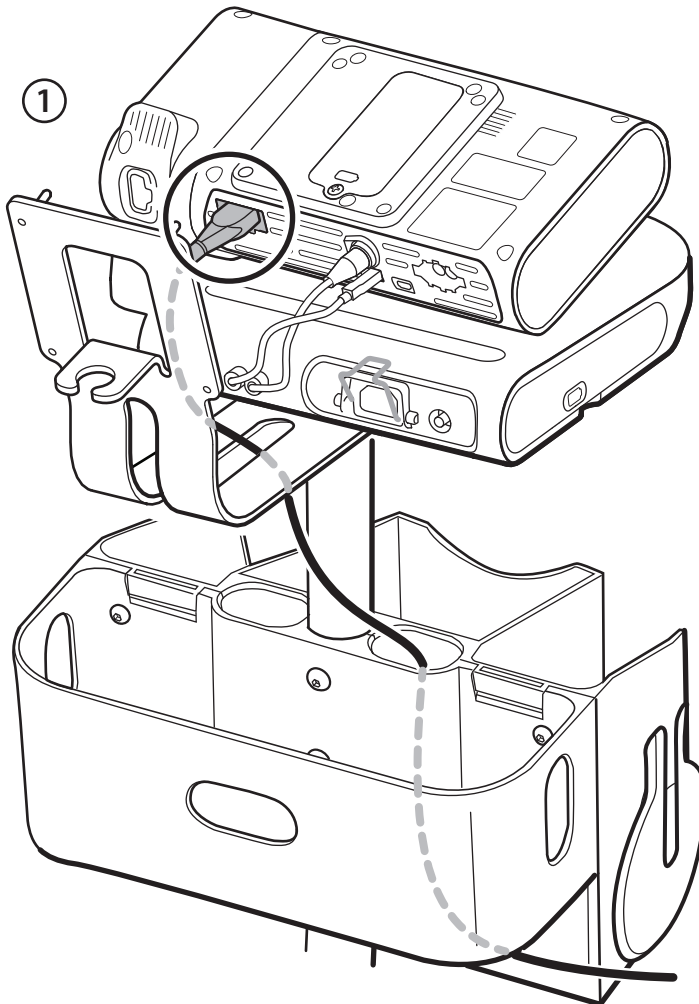
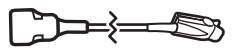
**B 2**

**NIBP**

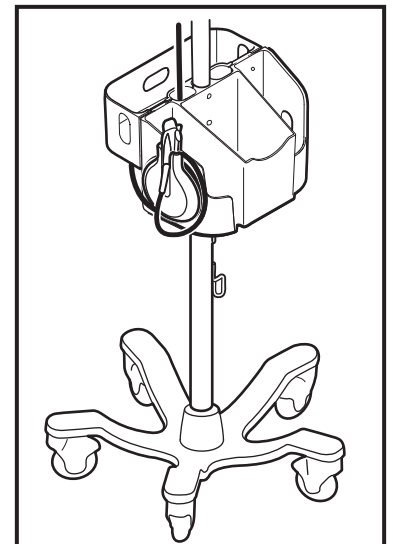
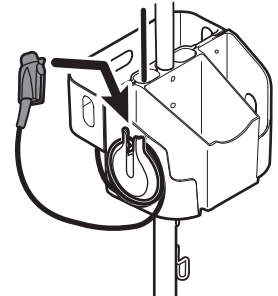


**B 3**

**SpO2**

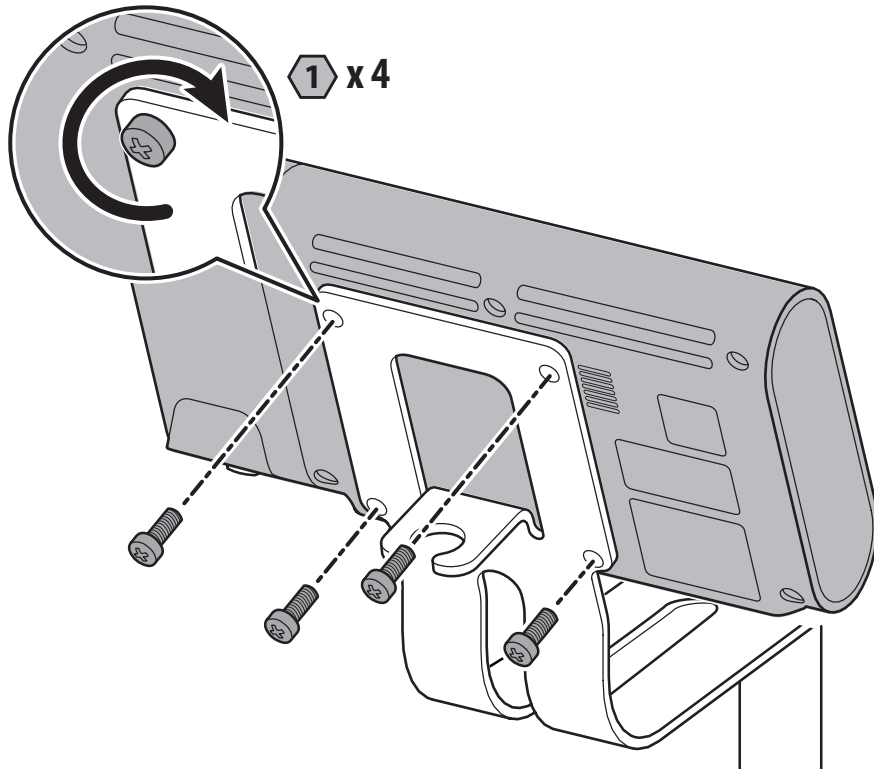


**2**





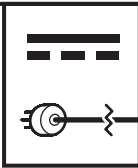
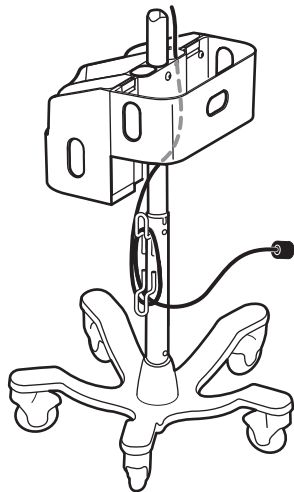
**B4**



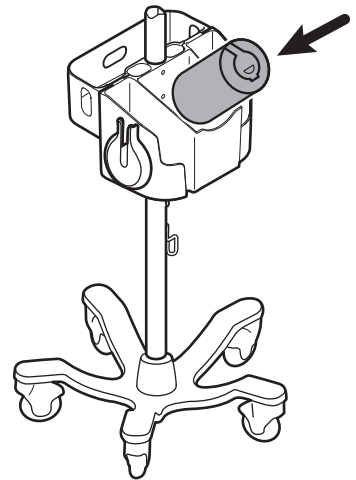
**1**

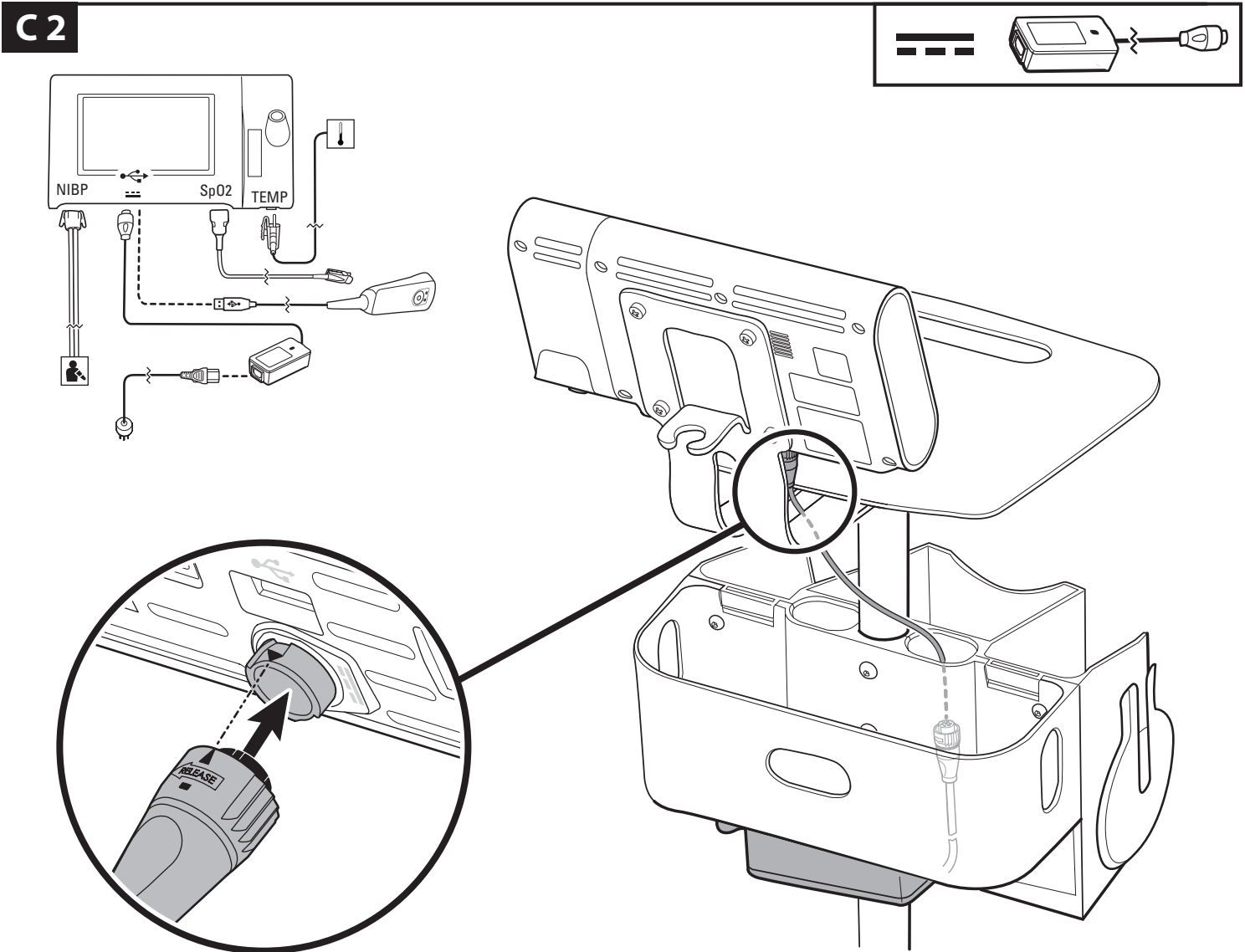
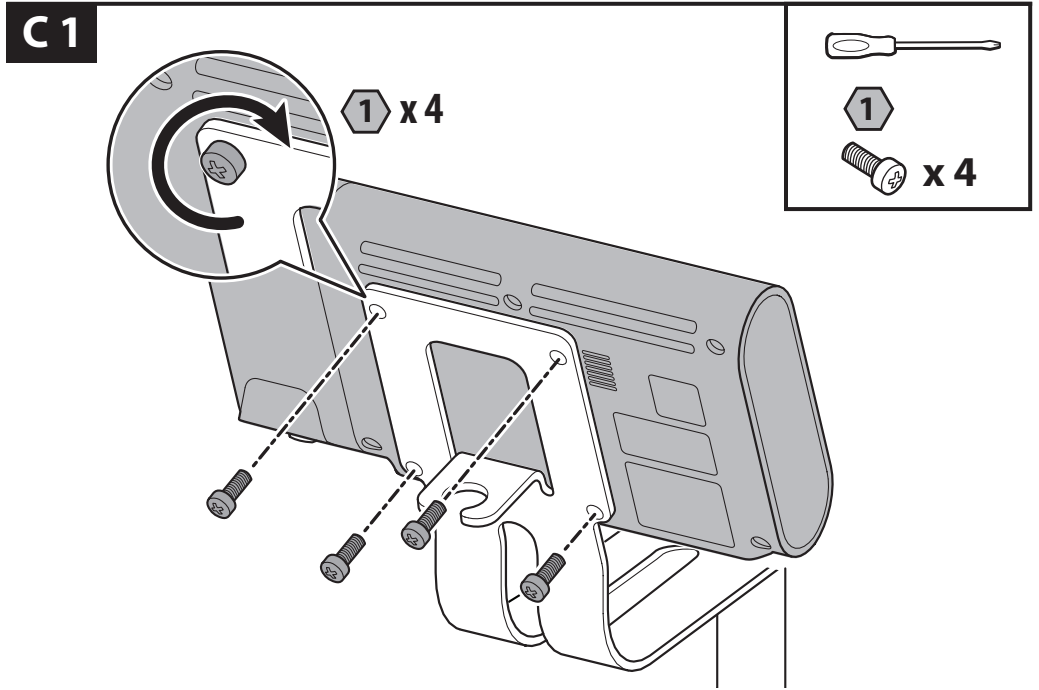
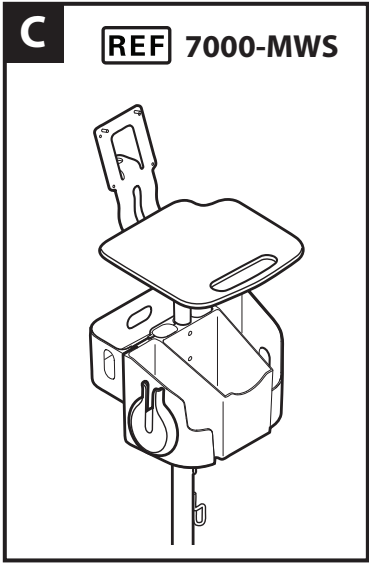
**x 4**

**B5**

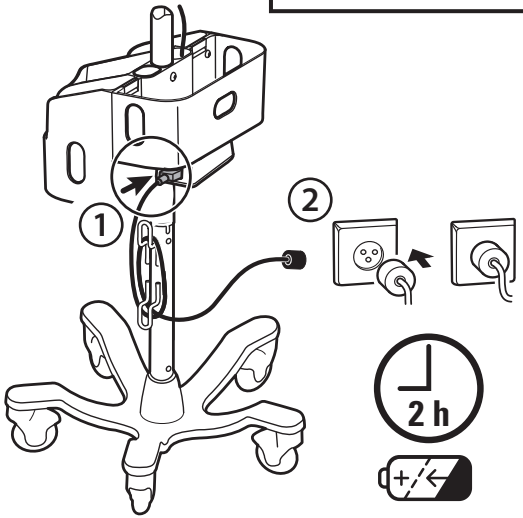
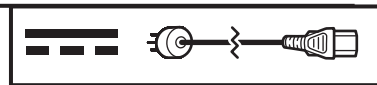


**B6**





**C3**



**C4**

